

Installation Guide

C-MOR Video Surveillance on Microsoft Hyper-V server



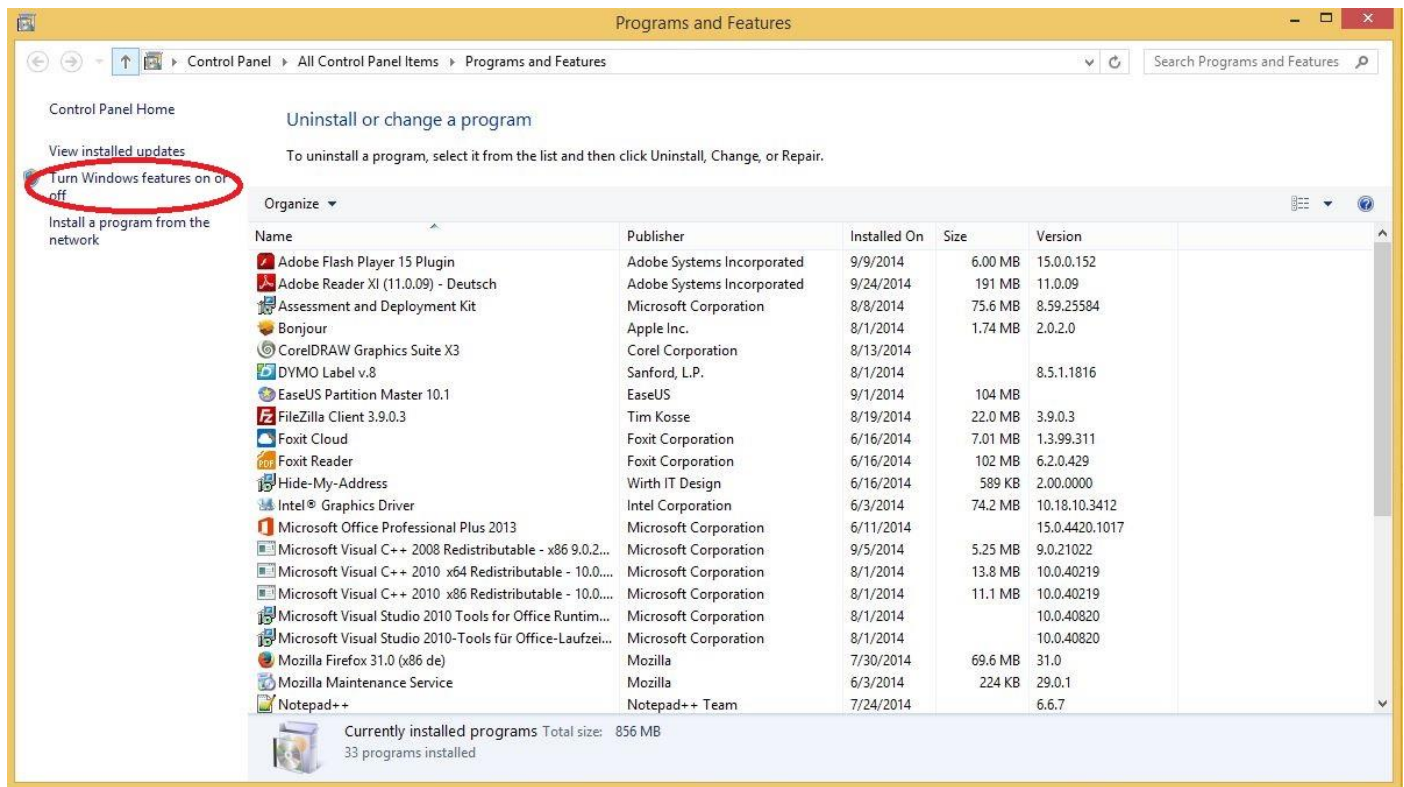
This Guide will show you the installation of C-MOR Video Surveillance on a Microsoft Hyper-V server. You are able to download the Microsoft Hyper-v 2012 server on <http://www.microsoft.com/en-us/server-cloud/hyper-v-server/>. If you want to download the Microsoft Hyper-V 2008 R2 you have to follow the following link <http://www.microsoft.com/de-de/download/details.aspx?id=3512>.

Also you need the C-MOR ISO file. This file you will find following this link: <http://www.c-mor.com/video-surveillance/download-vm.php>.

Hyper-V is an integrated windows feature on Windows 8, but you can also install on Windows 7 but therefore you need Microsoft Hyper-V Server 2008 or 2008 R2.

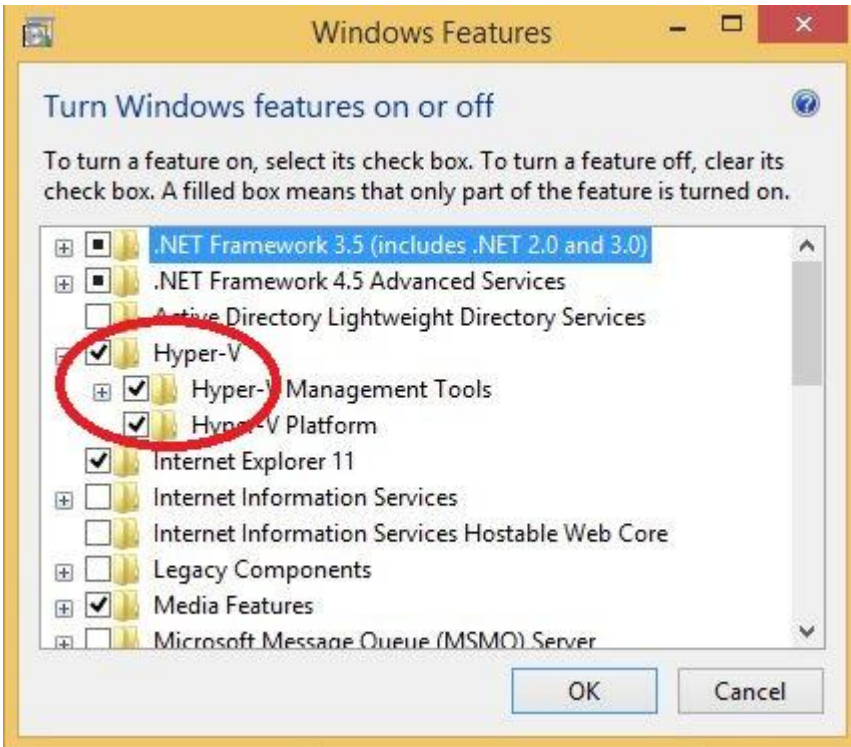
The following introduction is on Windows 8, but the installation doesn't differ from the installation on Windows 7.

First you have to activate Hyper-V on Windows therefore you have to go to Control Panel → Programs and Features there you have to choose „Turn Windows features on or off“.



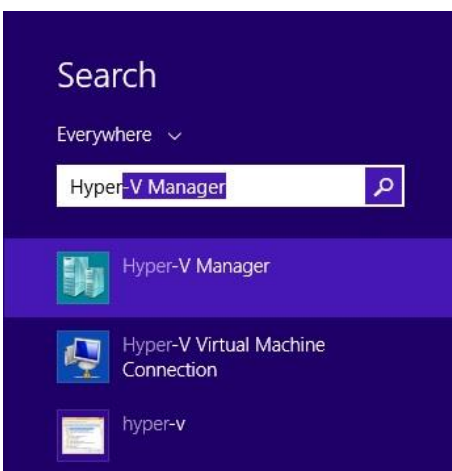


Select „Hyper-V“ to install the feature on your personal computer. Confirm your selection with „OK“.



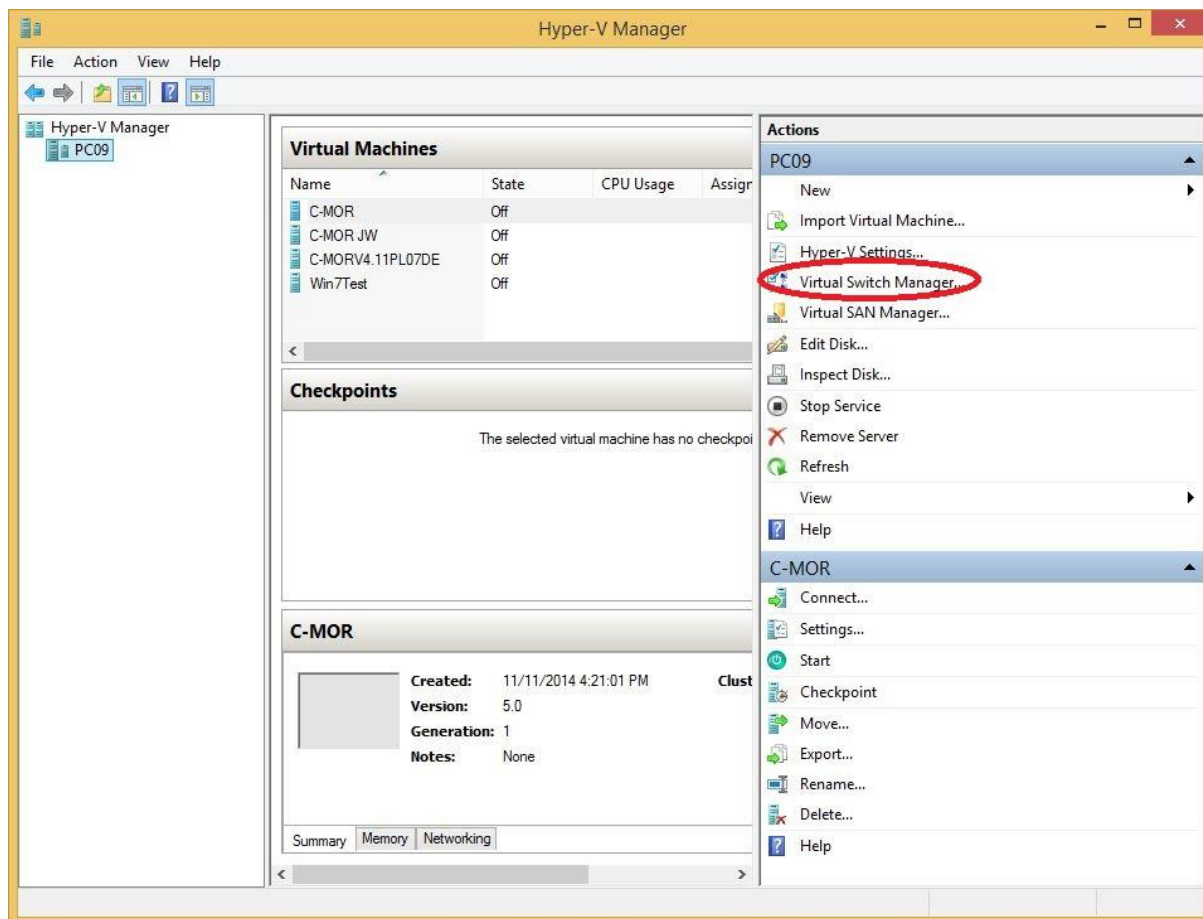
Now it is possible that you will get a request, which want to start new your PC. Follow this request and start your PC new to install Hyper-V.

After restart your PC you can search „Hyper-V“



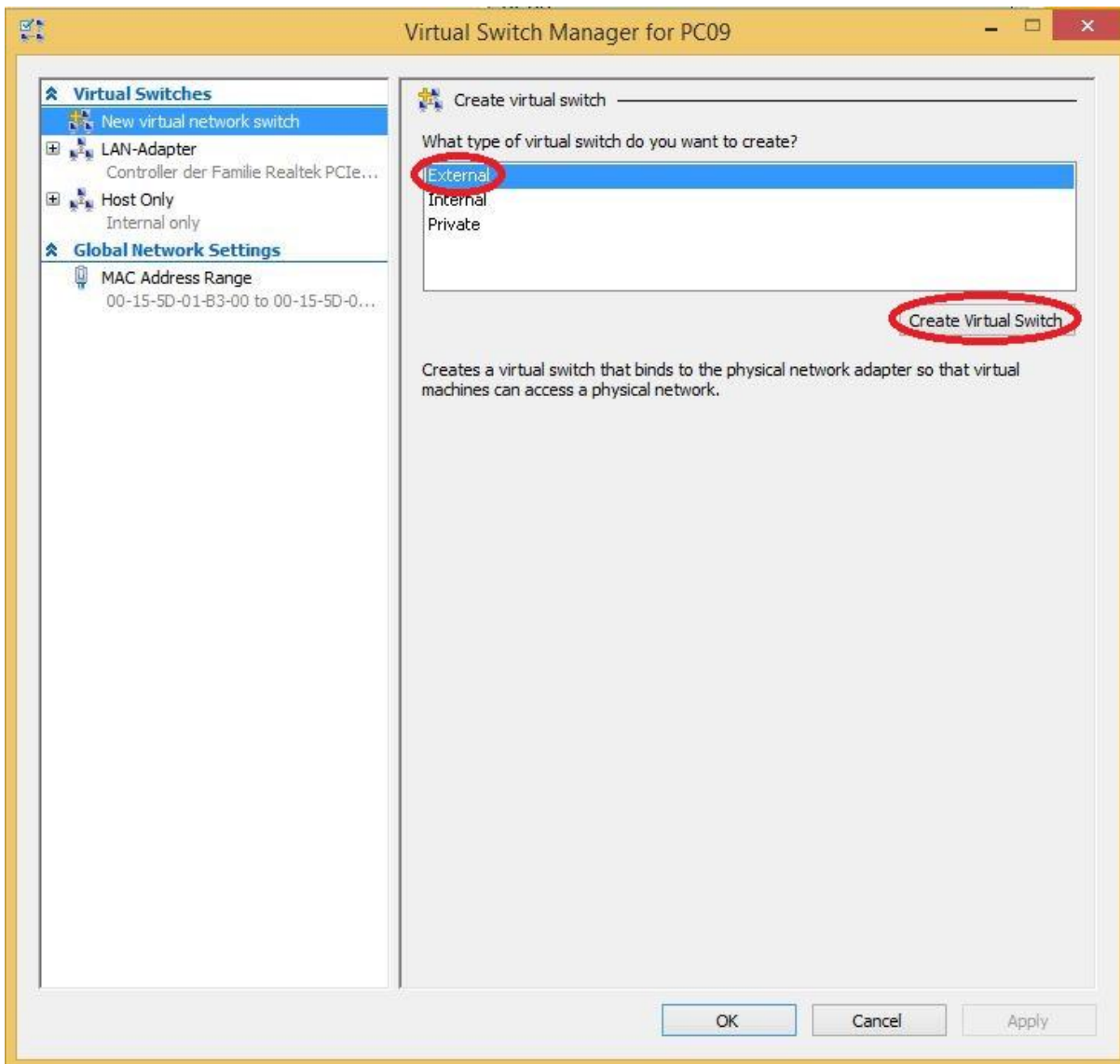


Before setting up a virtual machine it's necessary to create a network connection. This step is only necessary if no network was set up yet.



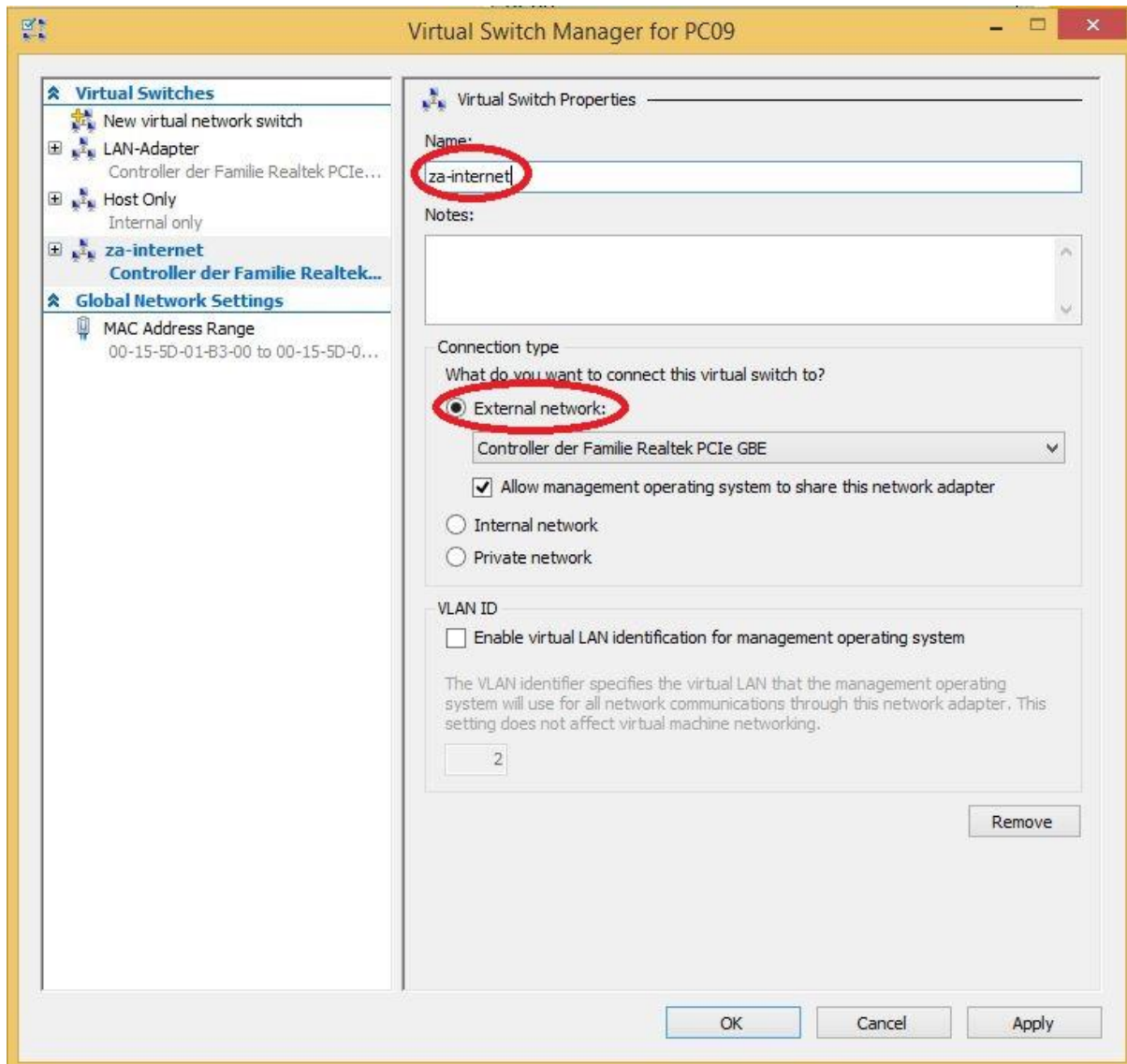


Please select „External“ and click on „Create Virtual Switch“. External means to create a connection with the computers physical network interface

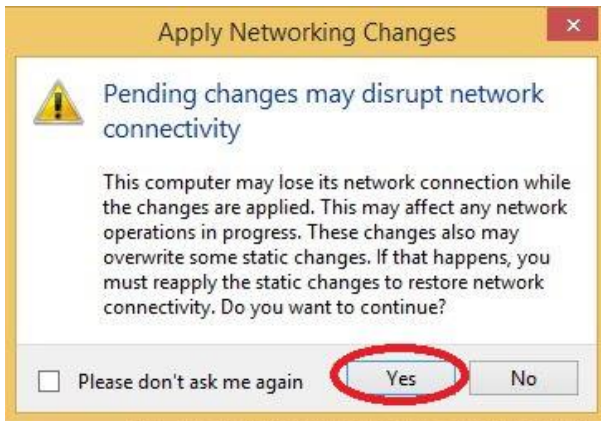




Now you can choose a name for your Virtual Switch. In our example we set „za-internet“. Be sure that your selection is still an „External network“. You can also select a network connection to connect the switch later. Have you followed the introduction please confirm with „OK“ and go on.



Confirm the following request with „Yes“

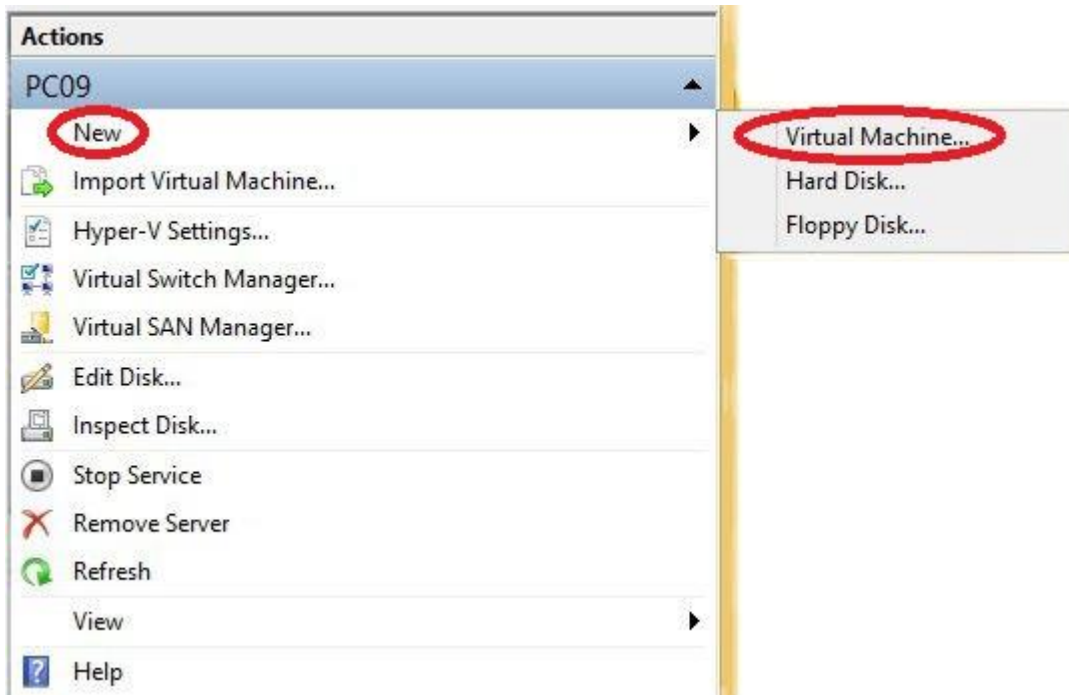


Attention! Your network connection will be break up. But during the next steps your connection will be restored again.



Now you are on the start page of Hyper-V-Manager.

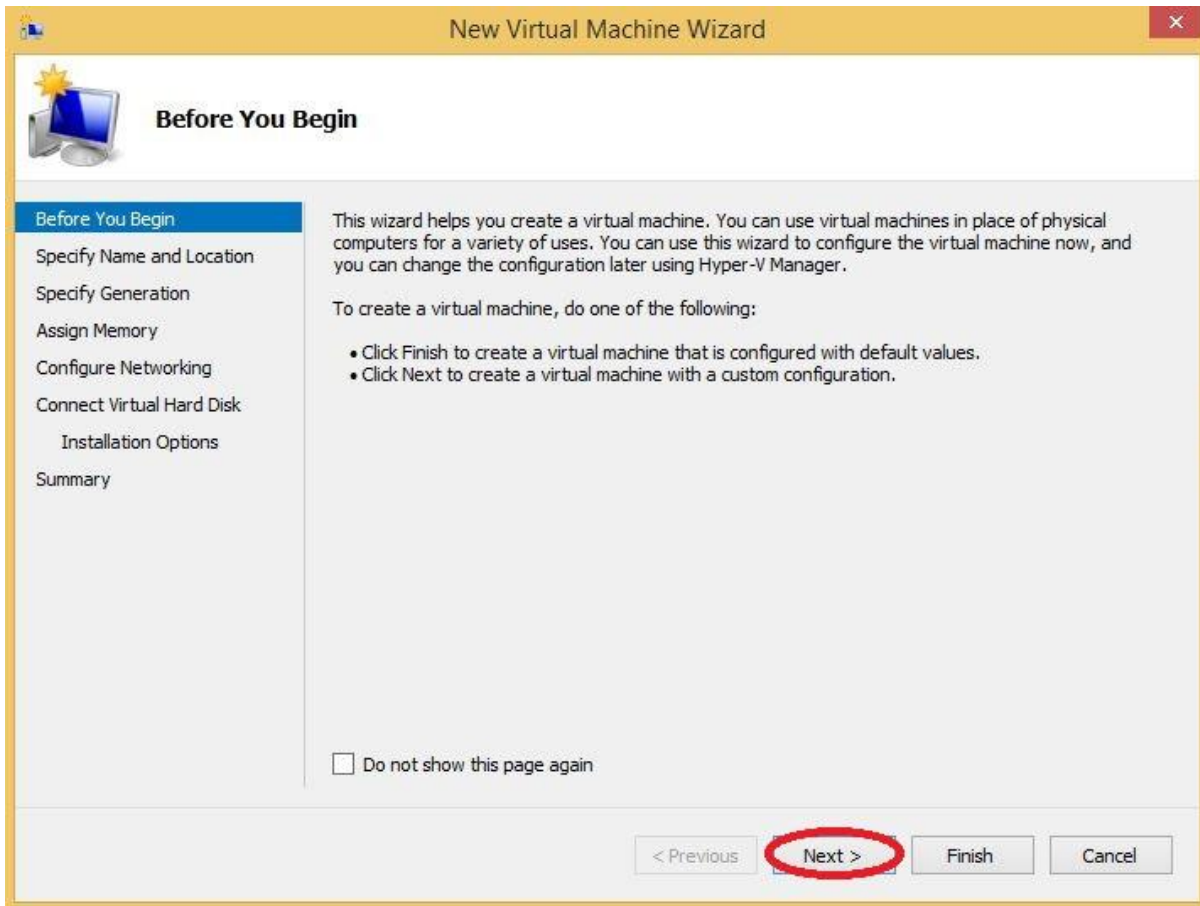
To create a virtual computer you have to select „New“ on the right side and then „Virtual Machine“.





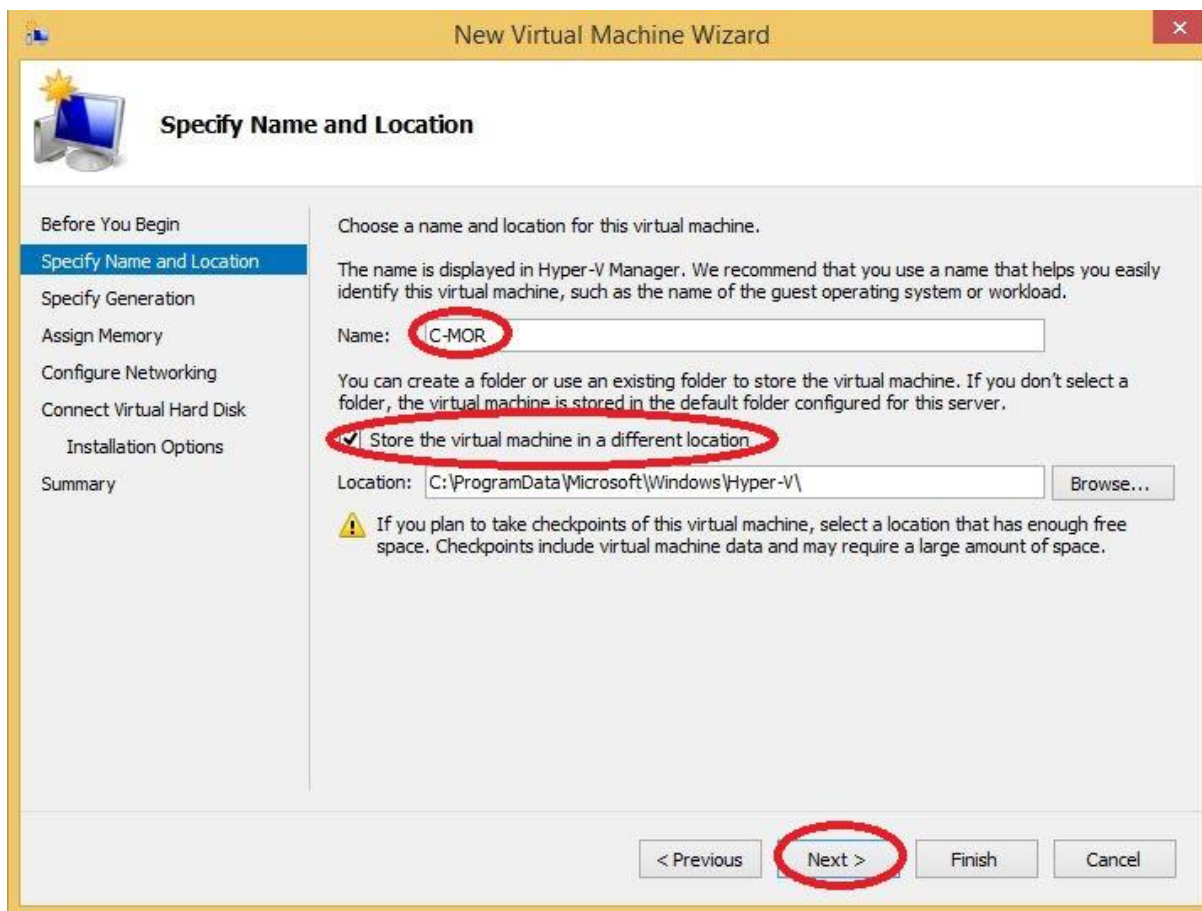
Following Window will be appear:

Just go on with the button „Next“.



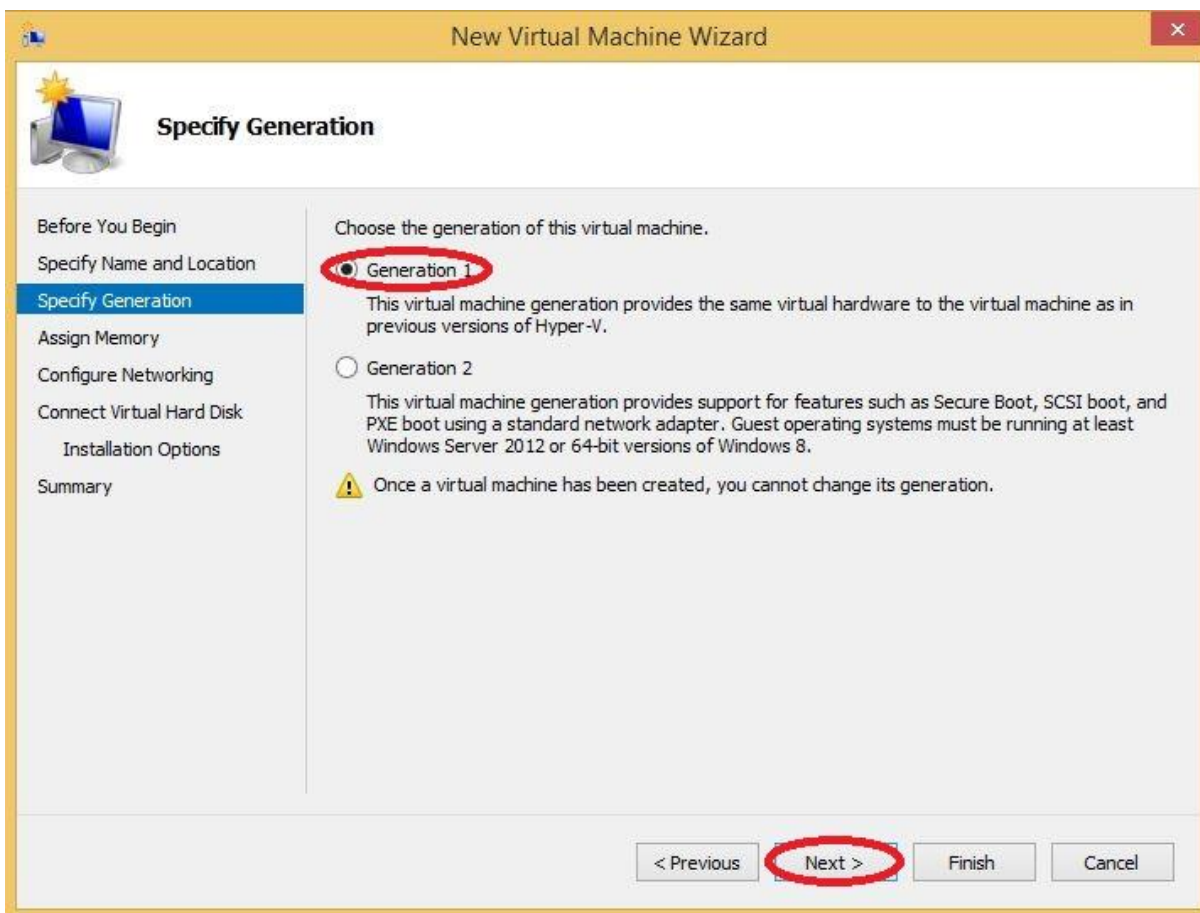


Step 1: You have to select a name for your virtual computer and to choose a location to save it, whether you want to save it. **Offer:** If you haven't much space on your „Local Disk C:“ choose another Disk to save it, e.g. D:\... If you have finished this step, go on with „Next“ to step 2.



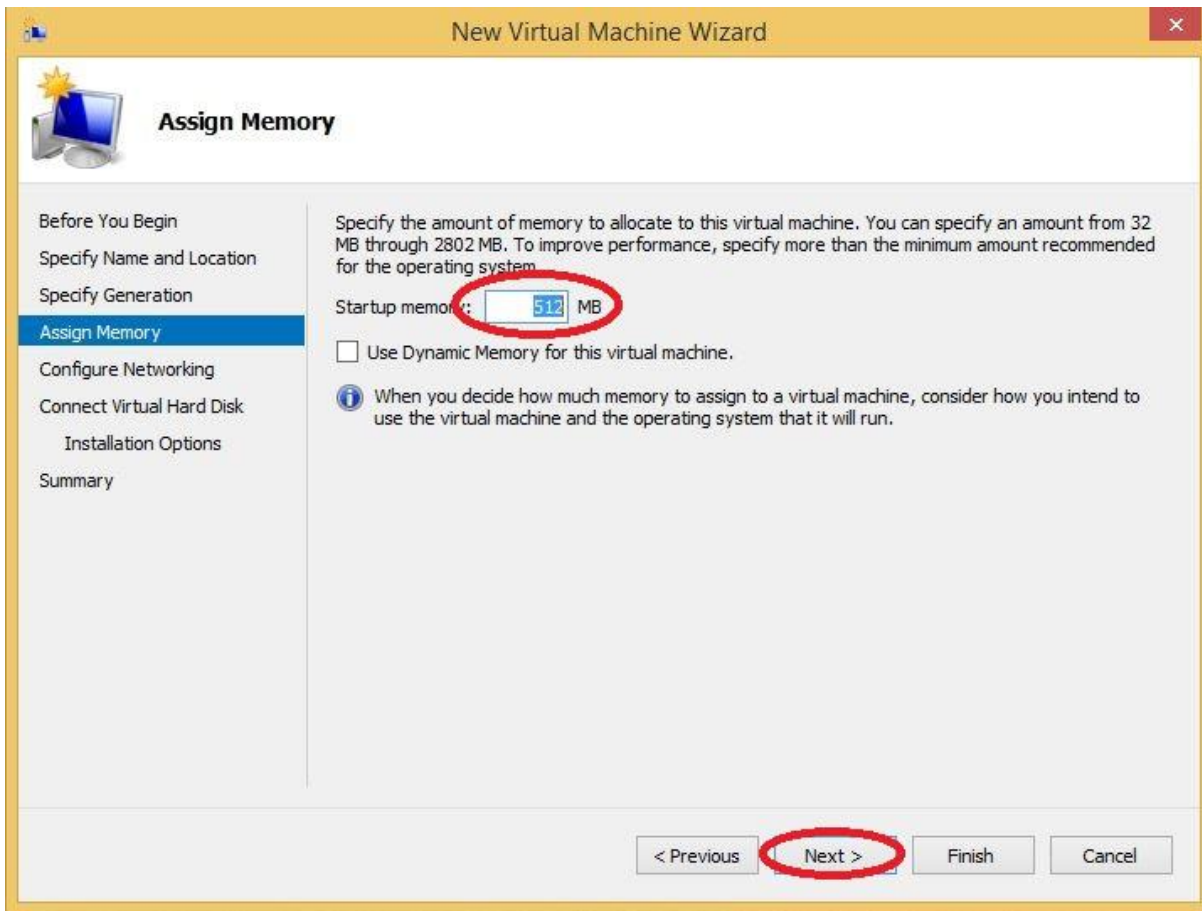


Step 2: Now you are asked to select a generation of the virtual machine. C-MOR only works with the setting „Generation 1“.



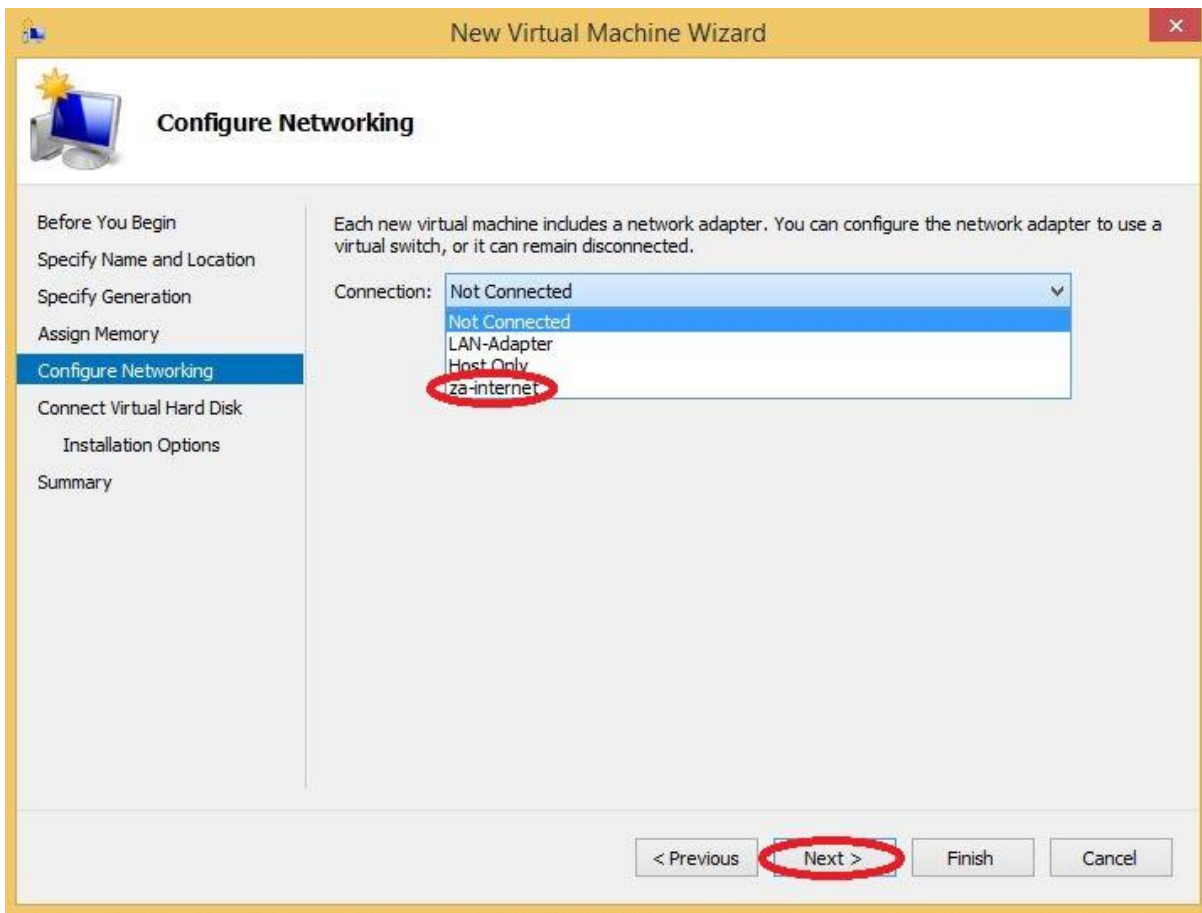


Step 3: Afterwards you reach the settings where you have to assign memory for your virtual machine. **Attention!** The size shouldn't be too big. We suggest to assign 1024MB virtual memory. C-MOR just with one camera is able to work with 512MB virtual memory.



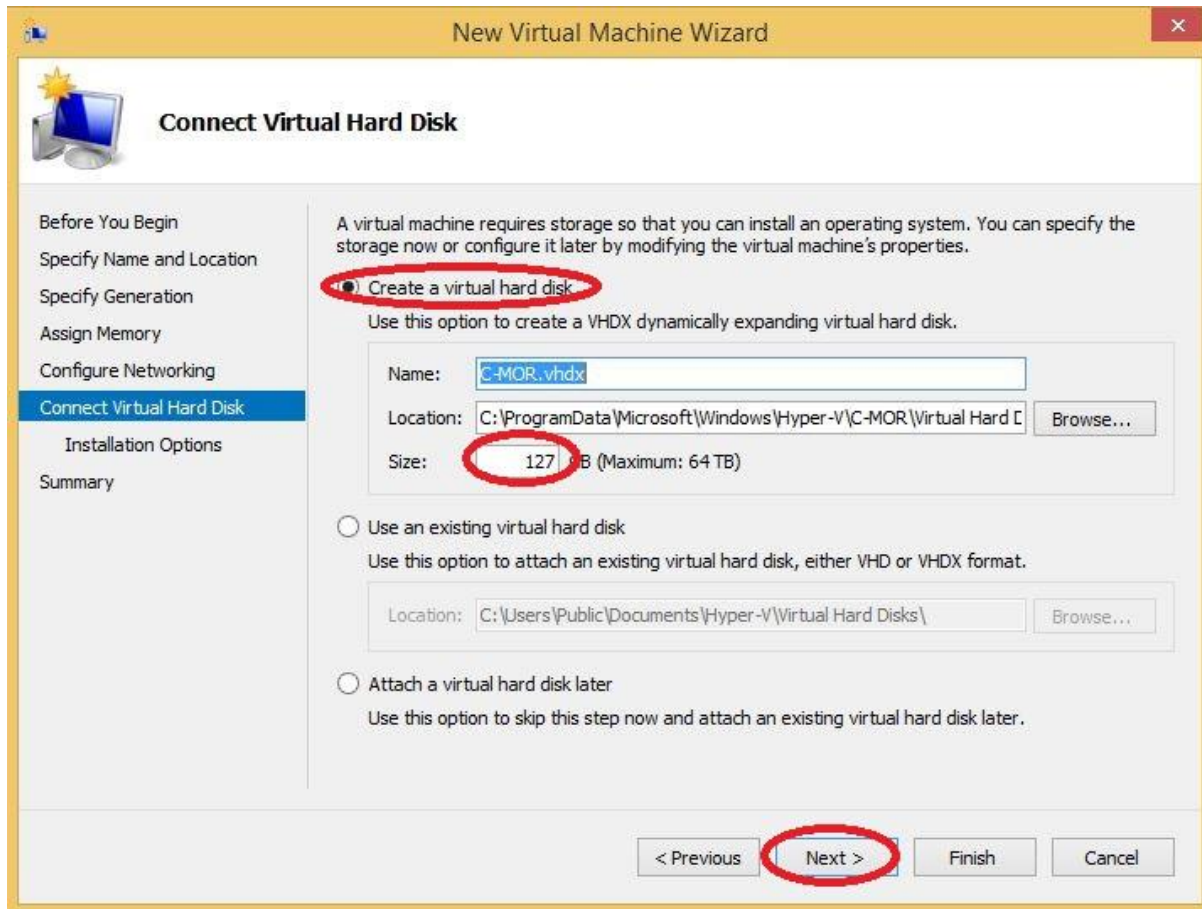


Step 4: Now you have to configure your network. Please select the virtual switch you have created first.



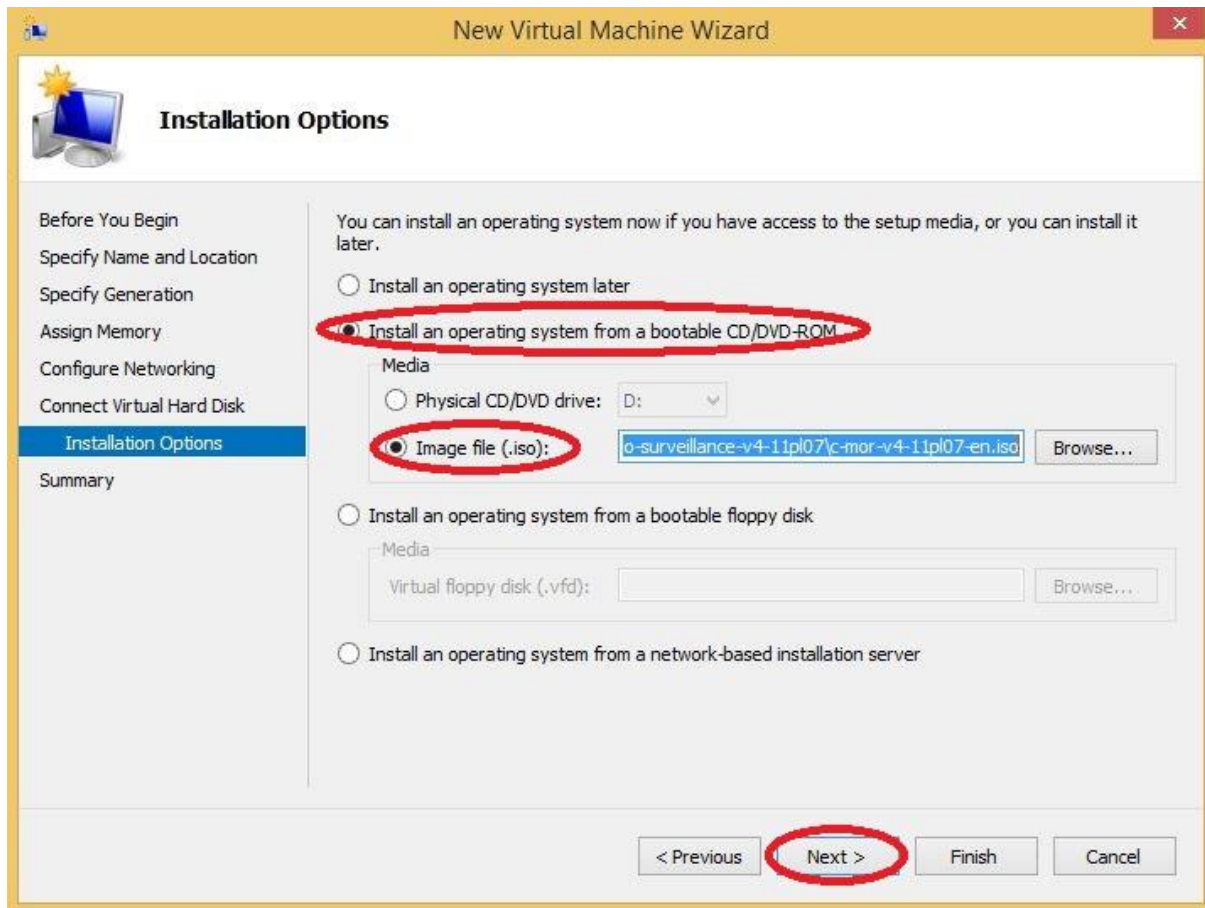


Step 5: To install the operating system the virtual machine feature space. Now you are able to choose the space you need. **Attention!** The space limit of C-MOR is 2TB! Now you have to decide for a virtual disk space. If you want to do the installation automatically it isn't necessary to remember the space later. But if you want to do your own partitioning you have to remember the space you choose for the installation later.



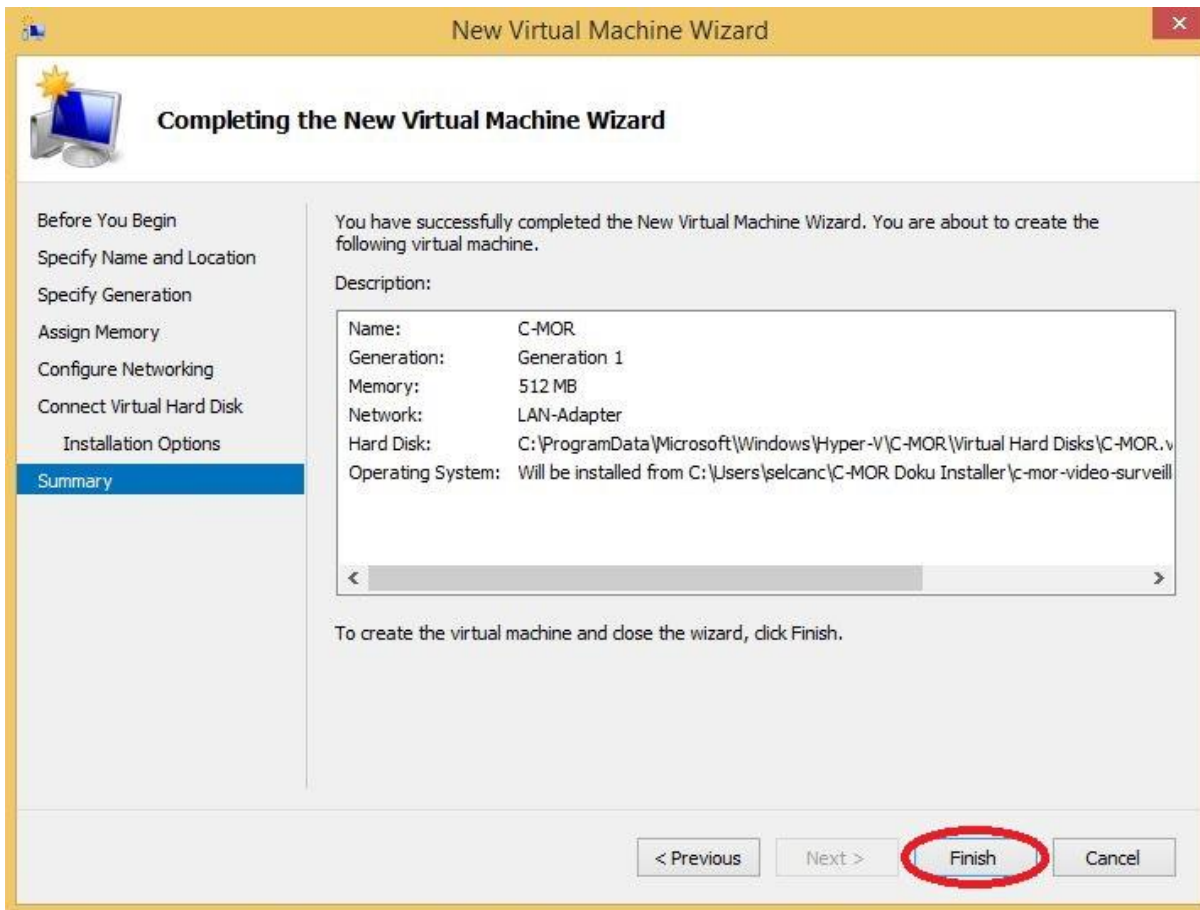


Step 6: Choose „Install an operating system from a bootable CD/DVD-ROM“, than choose „Image file (.iso)“ and now browse the ISO file you have downloaded first.



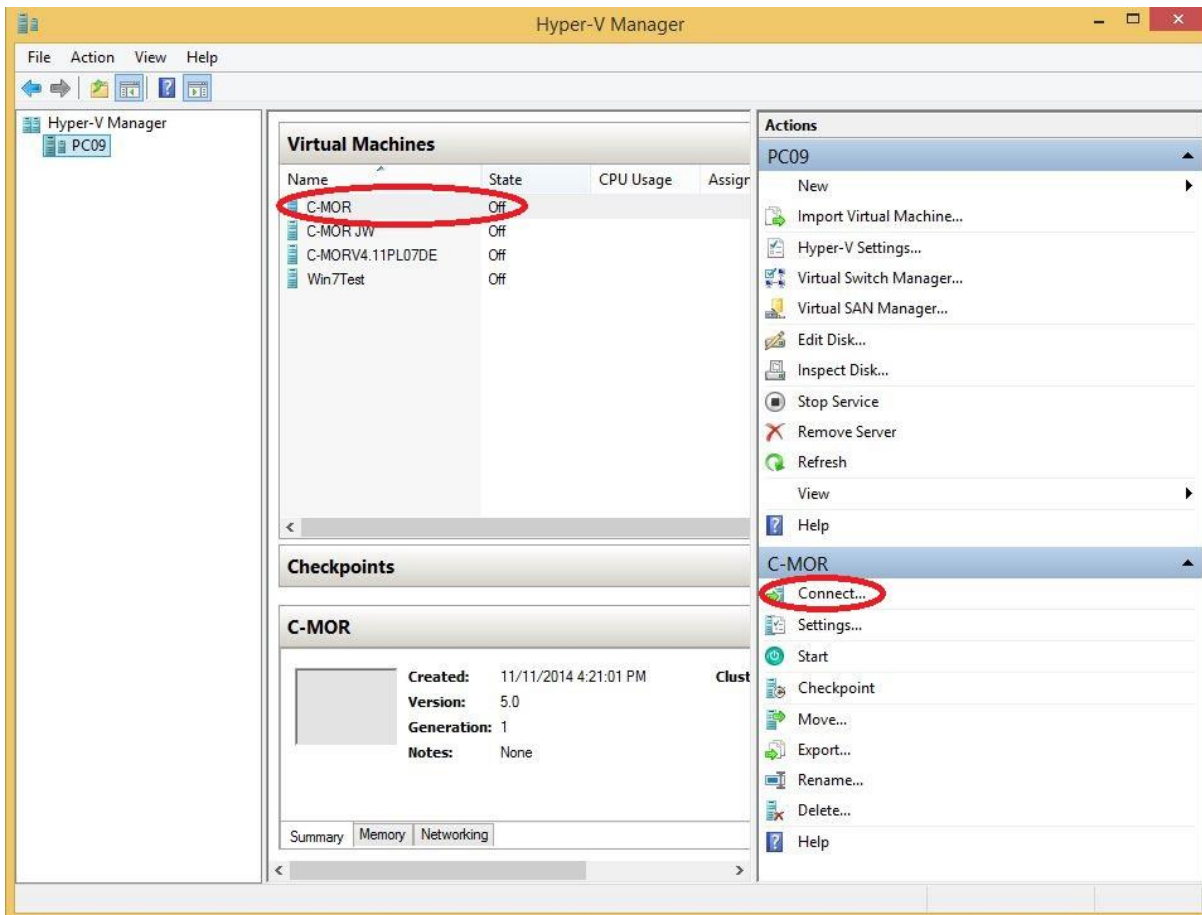


Step 7: Check your „summary“ of correctness. If everything is right, you can „finish“ the new virtual machine wizard.





Step 8: on the front page of Hyper-V Manager you can see your virtual machine. Certainly your new virtual machine is still off. So you have to select „Connect“ on the right side.



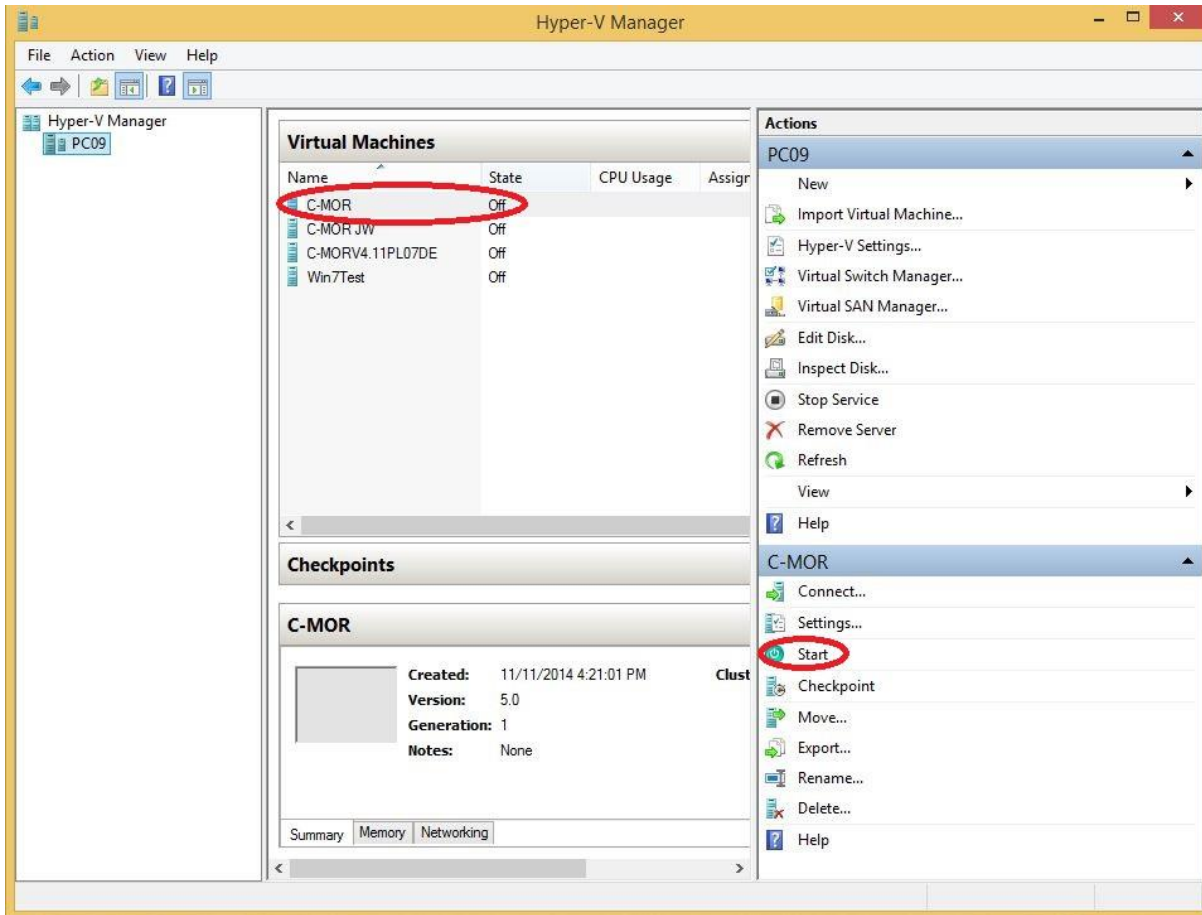


Following Window will appear:





This Screen tells you to start your C-MOR, so you have to select „Start“ on the right side of the Hyper-V-Manager to start your installation.



Installation Guide

C-MOR Video Surveillance on Microsoft Hyper-V server



The virtual C-MOR will be started and you can see following screen. You have to press enter to start the installation.

```
ISOLINUX 4.02 debian-20101014 ETCD Copyright (C) 1994-2010 H. Peter Anvin et al

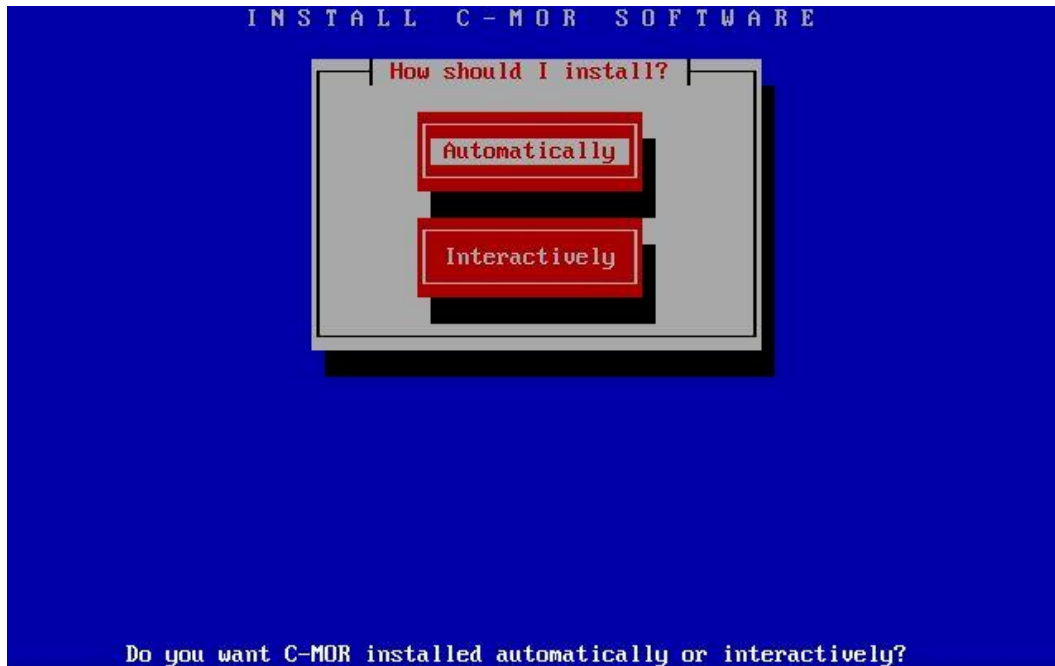
Press <enter> to start the C-MOR installation.

boot: _
```

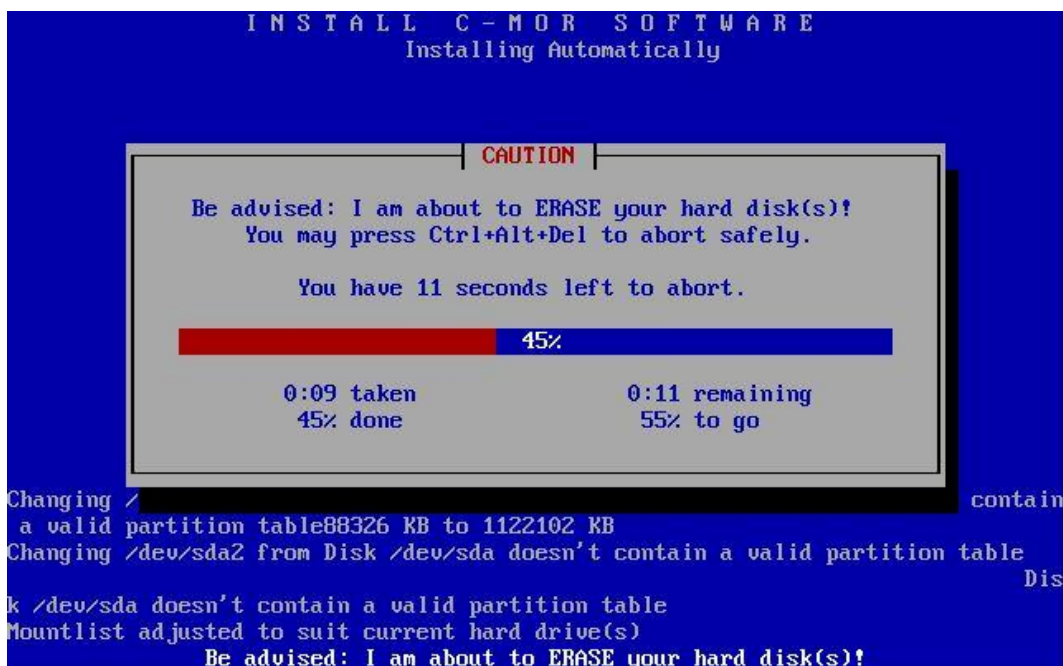


After this you have the possibility to install C-MOR „Automatically“ or „Interactively“. Please choose „Automatically“ to install a default hard drive partitioning.

If you want to install C-MOR with your own partition, you have to change now the manual. From this step you should use the documentary <http://www.c-mor.com/pdf/c-mor-expert-installation.pdf>.



You can see the progress of the installation:

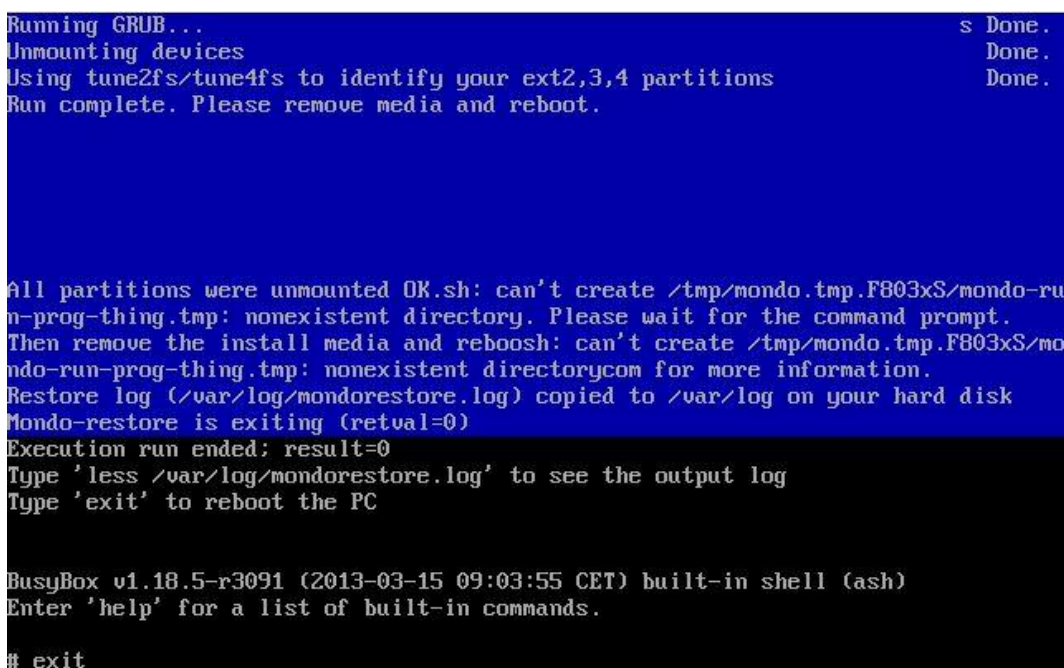




Your C-MOR Virtual Machine is finished now! Press enter to finish the installation.

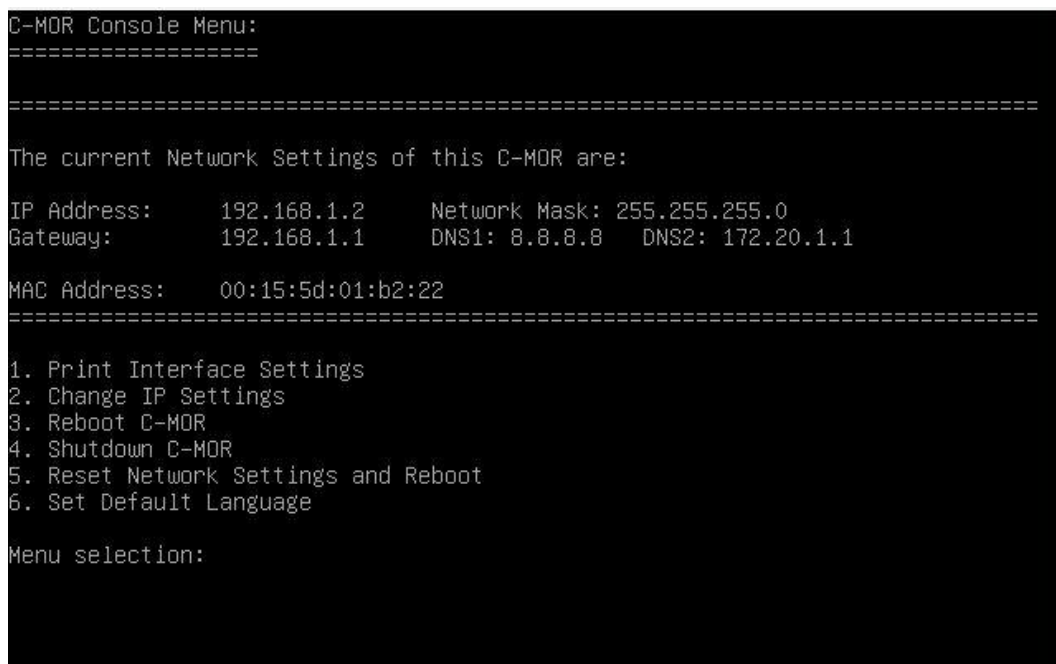
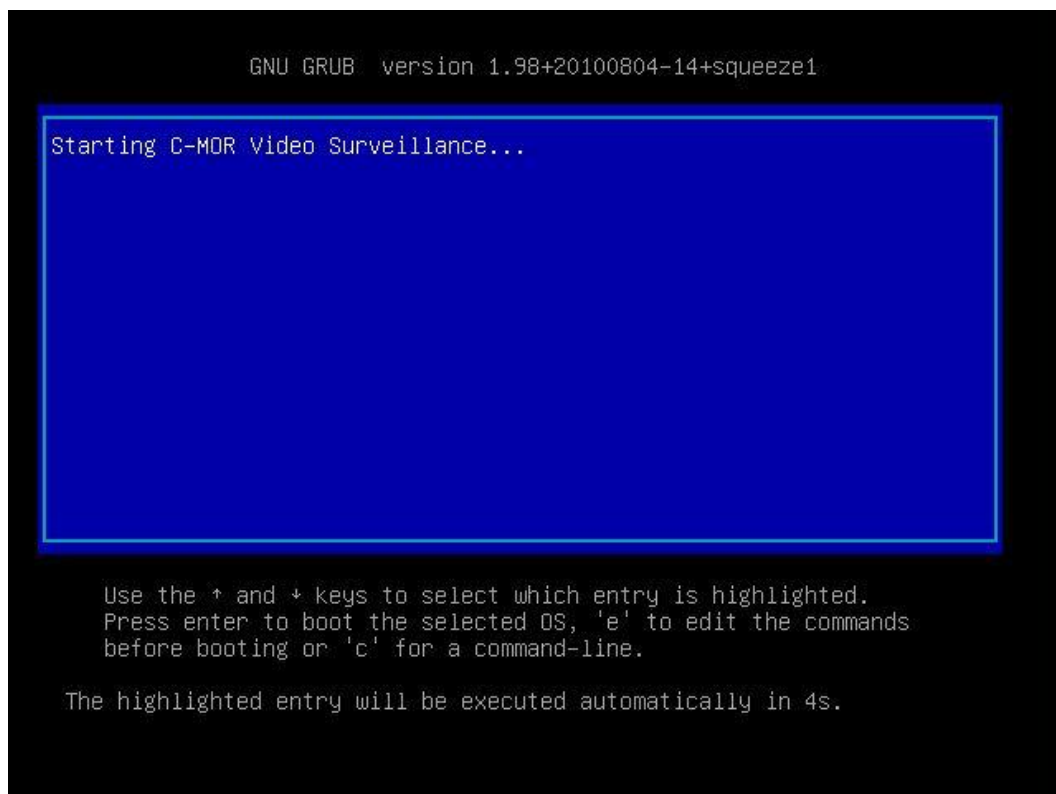


After this, you will see following screen. Please type „exit“ and press enter.





Now C-MOR will boot and restart once for initial settings! After you see C-MORs standard configuration. Now you are able to change the network information by selecting „2“.





You are able to insert your desired IP address. Before you can change the C-MOR installer will ask you for the administrator password. The standard password is „admin“.

```
1. Print Interface Settings
2. Change IP Settings
3. Reboot C-MOR
4. Shutdown C-MOR
5. Reset Network Settings and Reboot
6. Set Default Language

Menu selection: 2

Enter the C-MOR admin password:

Menu 2 selected

Enter new IP address (no validation check): 172.20.1.234
Enter new netmask (use 255.0.0.0 if not sure): 255.255.255.0
Enter new gateway address (no validation check): 172.20.1.1
=====
The Name Servers are set to: 8.8.8.8, 172.20.1.1.
Do you want to change the Name Servers? This is optionally! (y/N) y_
```

```
Enter new netmask (use 255.0.0.0 if not sure): 255.255.255.0
Enter new gateway address (no validation check): 172.20.1.1
=====
The Name Servers are set to: 8.8.8.8, 172.20.1.1.
Do you want to change the Name Servers? This is optionally! (y/N) y

Enter first DNS Server
(use 8.8.8.8 if not sure): 8.8.8.8

Enter second DNS Server
(use 8.8.4.4 if not sure): 172.20.1.1
=====
New IP address: 172.20.1.234
New Netmask: 255.255.255.0
New Gateway: 172.20.1.1
New DNS Server 1: 8.8.8.8
New DNS Server 2: 172.20.1.1

Is this correct? (y/N) y_
```



If you have insert your new network information right, you will see them on the console:

```
C-MOR Console Menu:
=====

-----

The current Network Settings of this C-MOR are:

IP Address:      172.20.1.234      Network Mask: 255.255.255.0
Gateway:        172.20.1.1        DNS1: 8.8.8.8   DNS2: 172.20.1.1

MAC Address:     00:15:5d:01:b2:22
=====

1. Print Interface Settings
2. Change IP Settings
3. Reboot C-MOR
4. Shutdown C-MOR
5. Reset Network Settings and Reboot
6. Set Default Language

Menu selection:
```

Now you can work with the web-browser, just enter your desired ip-address to open the C-MOR surface, in our case we have to insert `http://172.20.1.234`. Your Login is „admin“ and your password is „admin“. It appears a disclaimer which you have to accept to use C-MOR:

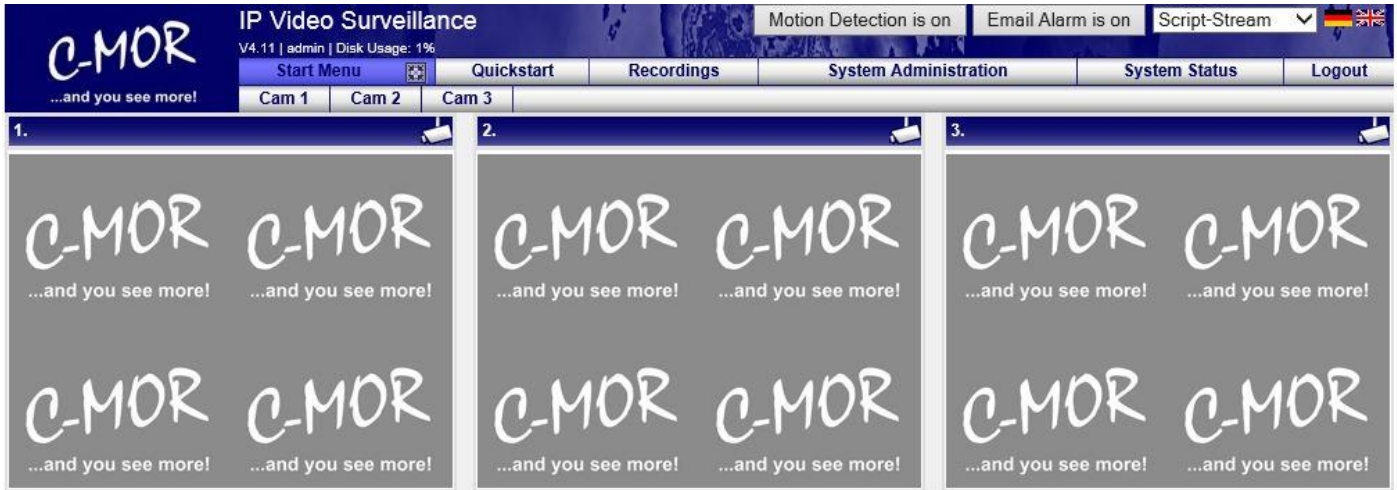
Disclaimer

1- Limitation of Liability. NOTWITHSTANDING ANYTHING ELSE IN THIS AGREEMENT OR OTHERWISE, C-MOR WILL IN NO EVENT BE LIABLE WITH RESPECT TO ANY SUBJECT MATTER UNDER ANY CONTRACT, NEGLIGENCE, STRICT LIABILITY OR OTHER LEGAL, CONTRACTUAL OR EQUITABLE THEORY FOR: (I) ANY INDIRECT, SPECIAL, INCIDENTAL OR CONSEQUENTIAL DAMAGES, HOWEVER CAUSED AND WHETHER OR NOT ADVISED IN ADVANCE OF THE POSSIBILITY OF SUCH DAMAGES; OR (II) DAMAGES FOR LOST PROFITS OR LOST DATA; OR (III) COST OF PROCUREMENT OF SUBSTITUTE GOODS, TECHNOLOGY OR SERVICES. NOTWITHSTANDING ANYTHING IN THIS AGREEMENT TO THE CONTRARY OR THE FAILURE OF ESSENTIAL PURPOSE OF ANY LIMITATION OF LIABILITY OR LIMITED REMEDY, C-MOR'S ENTIRE AGGREGATE LIABILITY ARISING FROM OR RELATING TO THIS AGREEMENT OR THE SUBJECT MATTER HEREOF, UNDER ANY LEGAL THEORY, WHETHER IN CONTRACT, TORT, INDEMNITY OR OTHERWISE, SHALL BE LIMITED TO THE AMOUNTS RECEIVED BY C-MOR UNDER THIS AGREEMENT WITH RESPECT TO THE PARTICULAR TRANSACTION GIVING RISE TO THE CLAIM REDUCED BY 1/24 OF THE PRICE PAID BY RESELLER FOR EACH MONTH SUCH APPLICABLE END USER HAS HAD THE PRODUCT.

2- C-MOR does not warrant that the use or operation of this product will be error free, nor does it warrant that any data stored on the product will remain accessible or uncorrupted. To protect against accidental data loss, back up your data frequently to multiple types of storage media.

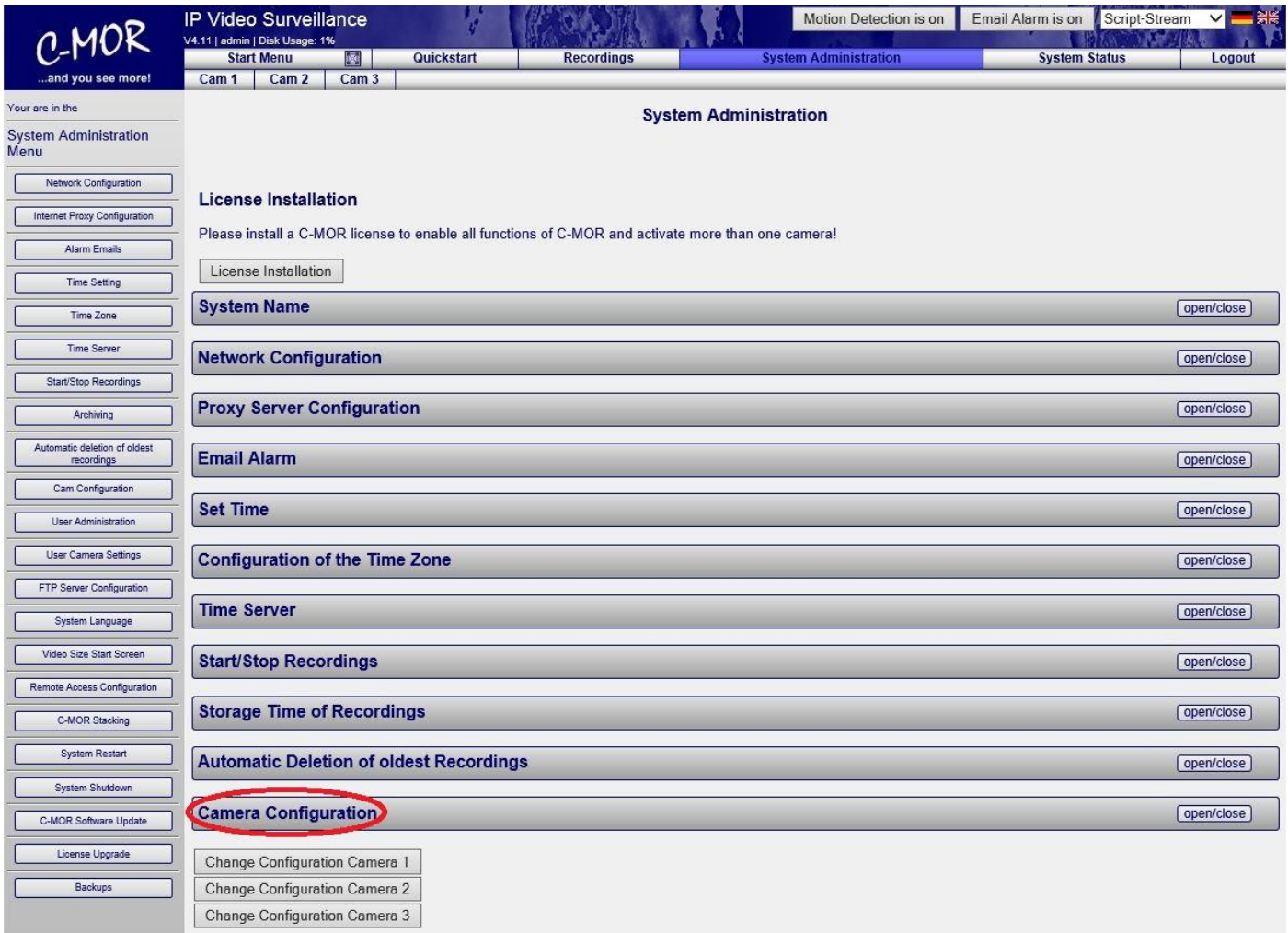


After accepting the disclaimer you are on the start page of C-MOR:





The C-MOR installation is finished. Change the menu to „System Administration“ and configure your cameras.



More Information for the configuration of C-MOR you can find on „**User Manual for C-MOR IP V4 Video Surveillance**“.

The Note “License Installation” just appears at the free version of C-MOR. If you have a licensed version yet, this note will not appear anymore.