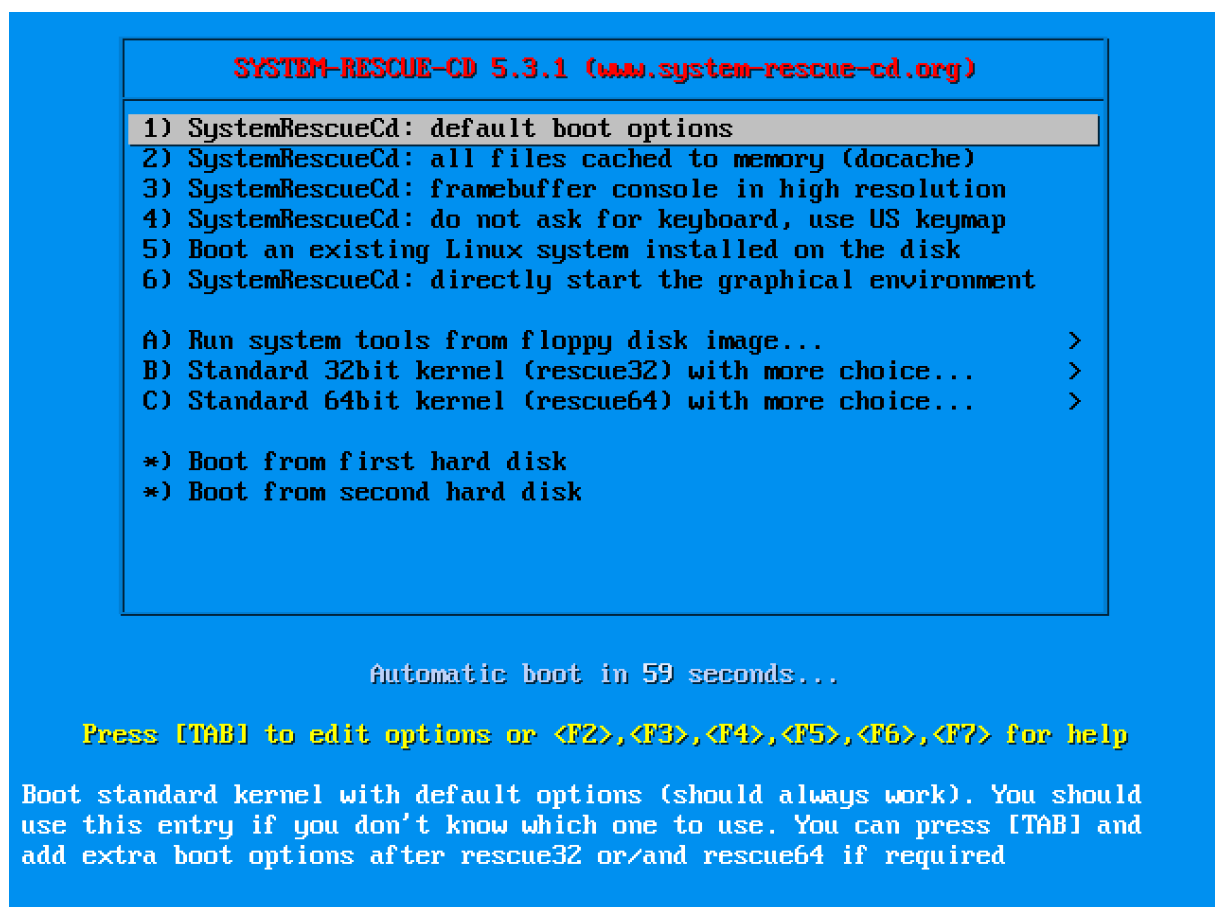


## Increasing the C-MOR data partition of a virtual C-MOR

This document describes how to make a C-MOR disk bigger. This is often required if the pre-configured C-MOR images for virtualization were installed.

Please resize your partition in the virtual environment prior starting the resize of the partition as described here. Only resizing to a bigger disk is supported.

Download the RescueCD from <http://www.system-rescue-cd.org/>. Connect the ISO Image or the CD/USB to your C-MOR and boot from it. Select 1. From the boot menu:



Select your keyboard layout:

```

1.9049331 Freeing unused kernel memory: 25300K
1.9212221 Write protecting the kernel read-only data: 20480k
1.9230271 Freeing unused kernel memory: 2020K
1.9285891 Freeing unused kernel memory: 1616K
1.9340091 x86/mm: Checked W+X mappings: passed, no W+X pages found.
1.9347671 x86/mm: Checking user space page tables
1.9399811 x86/mm: Checked W+X mappings: passed, no W+X pages found.
1.9405411 rodata_test: all tests were successful
>> Loading kernel modules...
>> Waiting 1 seconds...
>> Loading keymaps
Please select a keymap from the following list by typing in the appropriate
name or number. You should prefer the name to the number (for example
type 'fr' instead of '16'). Hit Enter for the default 'us' keymap.

  1 azerty   2 be       3 bg       4 br-a     5 br-l     6 by       7 cf
  8 croat   9 cz      10 de     11 dk     12 dvorak  13 es     14 et
 15 fi     16 fr     17 gr     18 hu     19 il     20 is     21 it
 22 jp     23 la     24 lt     25 mk     26 nl     27 no     28 pl
 29 pt     30 ro     31 ru     32 se     33 sg     34 sk-y    35 sk-z
 36 slovene 37 trf    39 ua     40 uk     41 us     42 wangbe  43 fr_CH
 44 speakup 45 cs_CZ  46 de_CH  47 sg-lat1 48 fr-bepo 49 colemak 50 de_neo

default choice (US keymap) will be used if no action within 20 seconds
<< Load keymap (Enter for default):

```

Start the X Windows environment by entering “startx”:

```

===== SystemRescue-Cd ----- 5.3.1 ===== tty1/6 ==
                http://www.system-rescue-cd.org/

* Type net-setup eth0 to specify ethernet configuration.
* If your PC is on an ethernet local network, you can configure by hand:
  - ifconfig eth0 192.168.x.a (your static IP address)
  - route add default gw 192.168.x.b (IP address of the gateway)

* To be sure there is an ssh server running, type /etc/init.d/sshd start.
  You will need to create an user or to change the root password with passwd.

* Available console text editors : nano, vim, qemacs, zile, joe.
* Web browser in the console: elinks www.web-site.org.

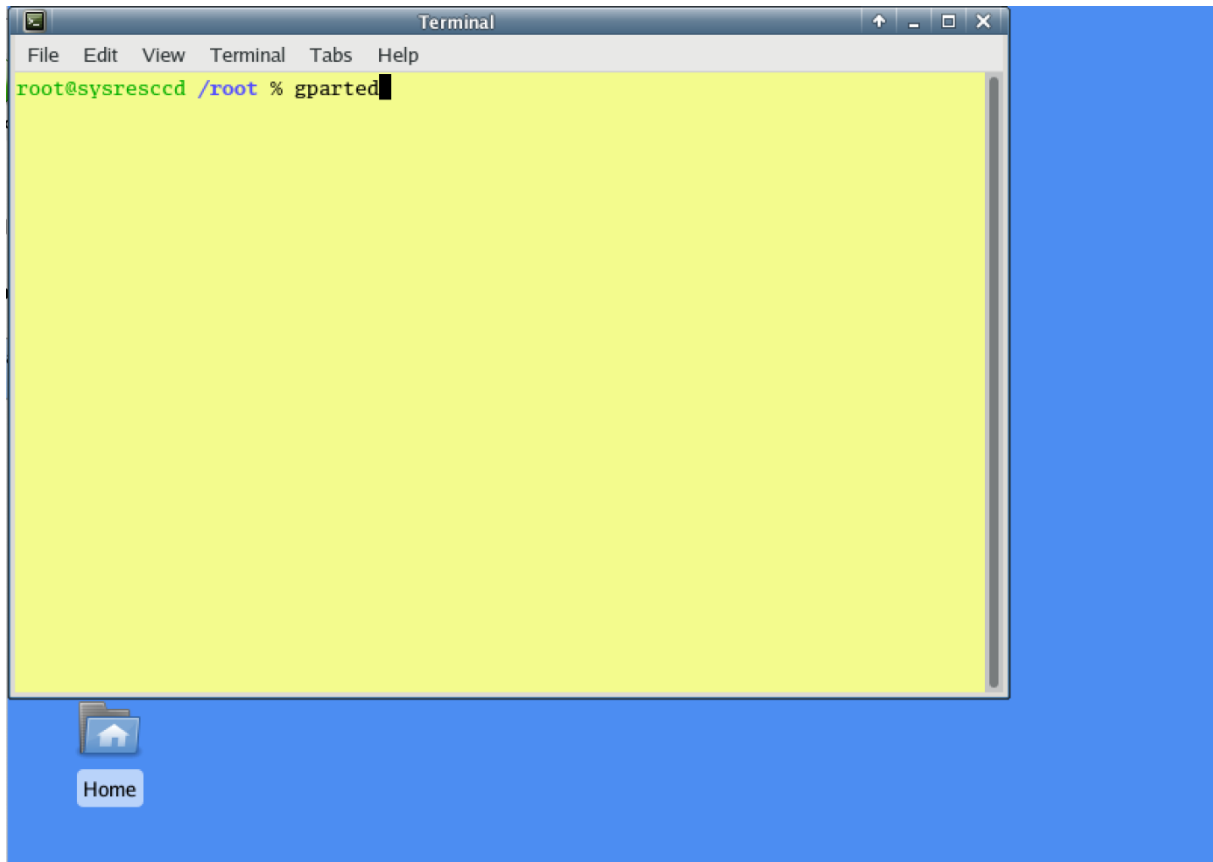
* Ntfs-3g : If you need a full Read-Write NTFS access, use Ntfs-3g.
  Mount the disk: ntfs-3g /dev/sda1 /mnt/windows

* Graphical environment :
  Type startx to run the graphical environment
  X.Org comes with the XFCE environment and several graphical tools:
  - Partition manager:..gparted
  - Web browsers:.....firefox
  - Text editors:.....gvim and geany

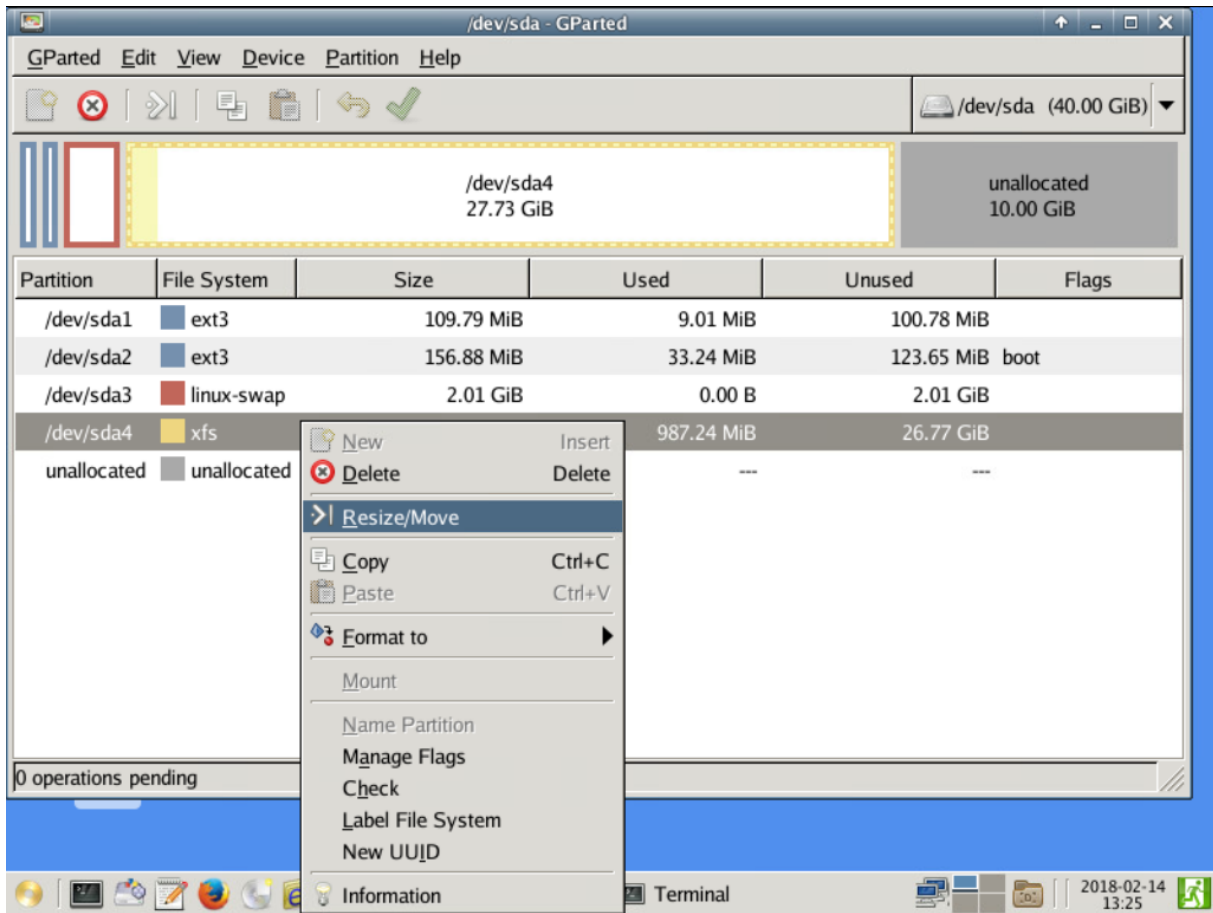
root@sysresccd /root % startx

```

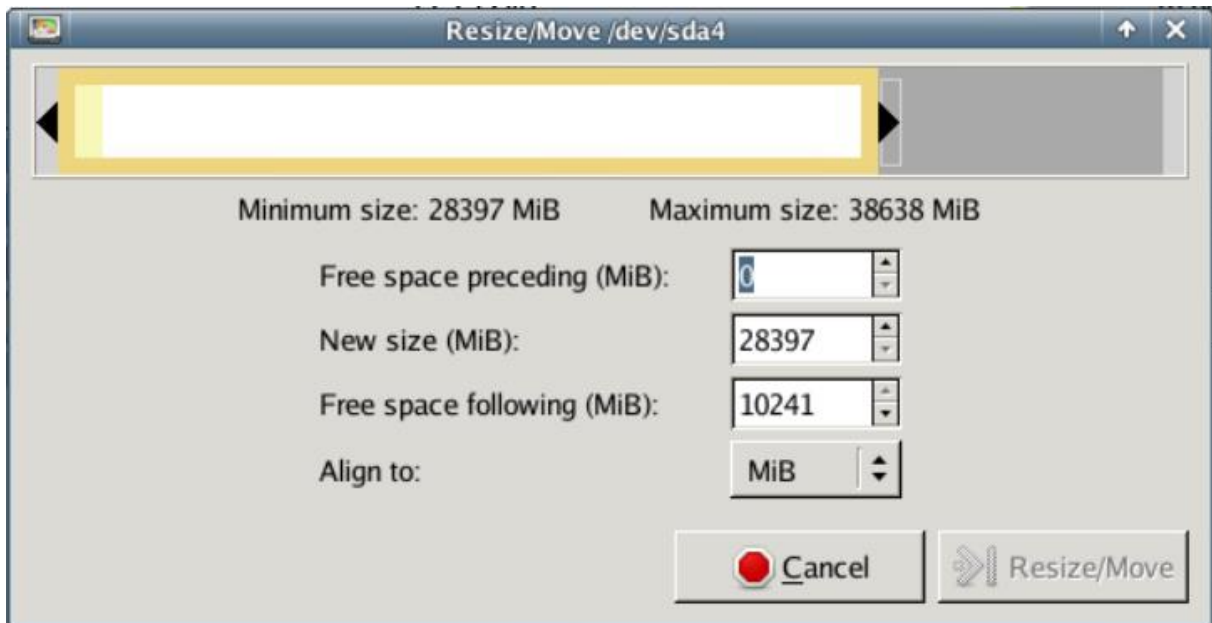
Open a X-Terminal Window and start the program “gparted” to resize the data partition:



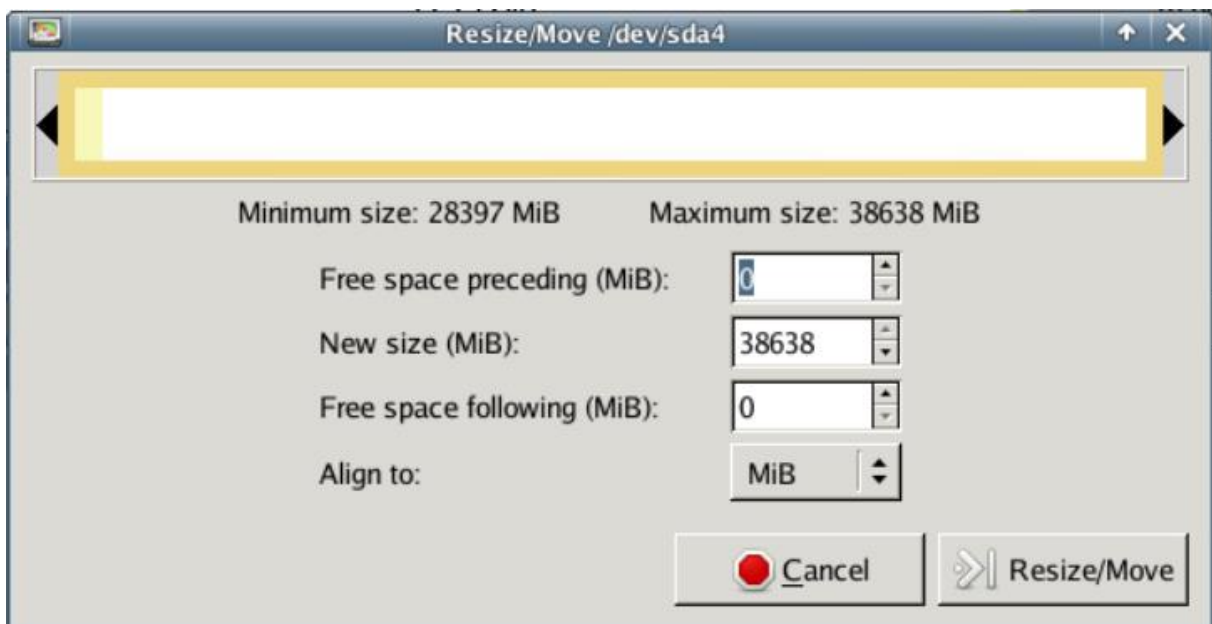
Select the partition „/dev/sda4“, open the context menu and select “Resize/Move”:



Resize it by holding the black right triangle with your mouse and move it to the right:

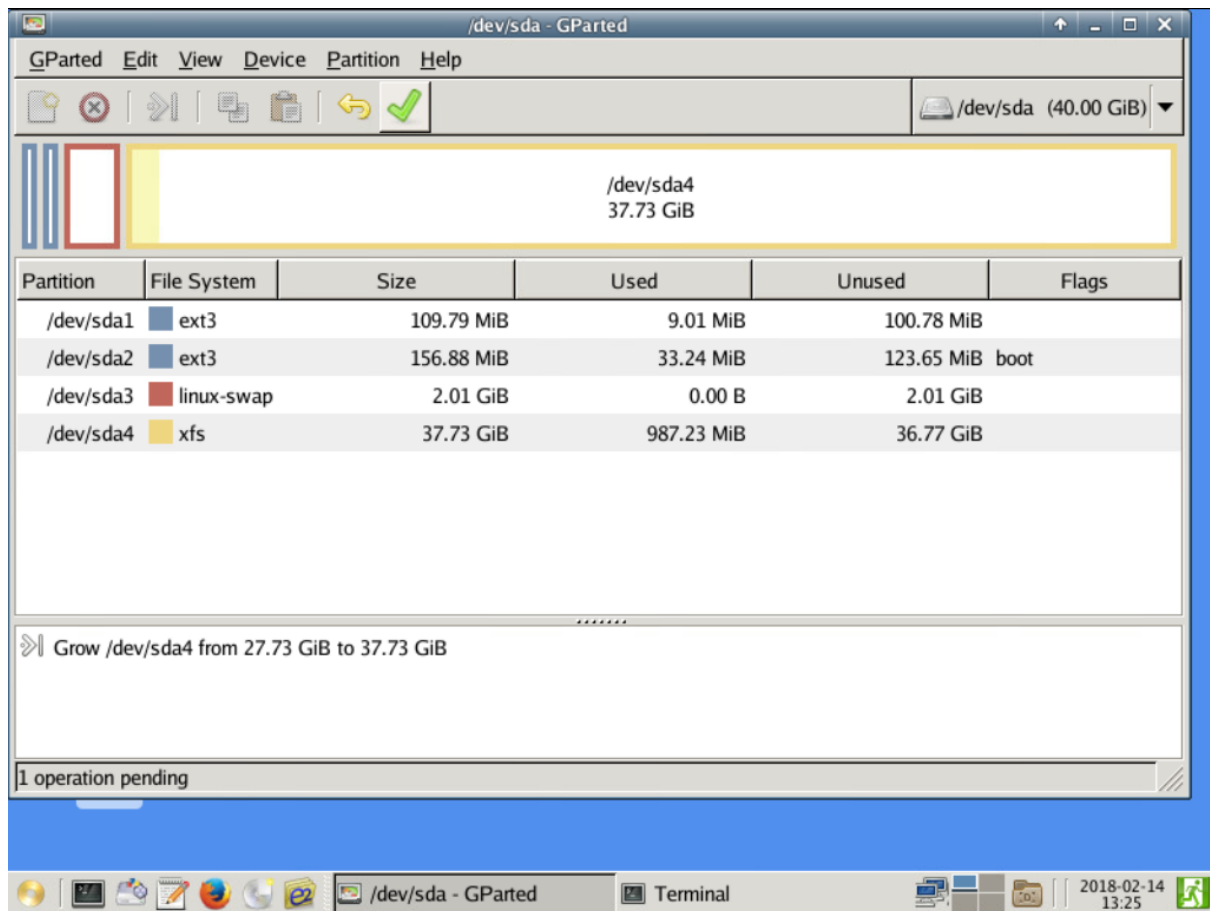


The increased partition:



Click „Resize/Move“ to confirm the changes.

The new disk space looks changed like this:



Confirm the changes by leaving gparted through the “GParted” menu. Click “Apply”:



Exit gparted, remove the CDROM from your C-MOR and reboot. Finished.